



Manchester Triage System from start to ... **finish** October 2017

Kevin Mackway-Jones



**Manchester
Triage
System**



The Manchester Triage System is:

- A common language of urgency





**Emergency
Triage**



**Telephone
Triage and
Advice**



Pathfinder



**SAFE
Triage**



**Nursing and
Residential
Triage**

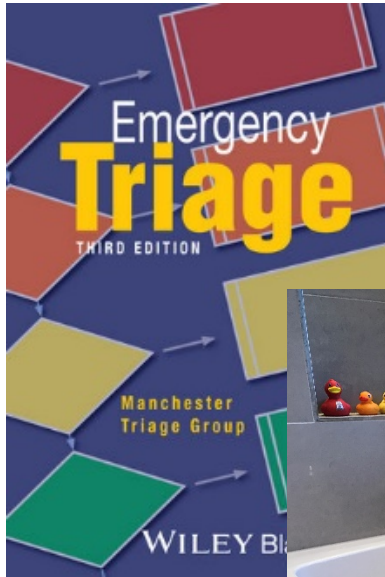


**Non-HCP
Triage**



**Manchester
Triage
System**





**Manchester
Triage
System**



**Advanced
Life
Support
Group**

A charity dedicated to saving life by providing training

© ALSG/MTG, 2017



ANNOUNCEMENTS

Go to the Updates page in your MTS menu to see the recent changes to the MTS



Telephone Triage and Advice

The MTS Telephone Triage and Advice uses the same principles as Emergency Triage; with all charts, methodology and discriminator definitions following the same, easily recognisable MTS format ...

The Manchester Triage System is a clinical risk management tool used Worldwide to safely manage patient flow when clinical demand exceeds capacity

[Click here to learn more](#)

Find all information and resources in the dropdown lists at the top of the page



Emergency Triage



MTS 3e post-publication updates

Changes highlighted in red are considered safety changes and should be implemented as soon as possible.

Chart	
[Click on the blue links below for a summary of changes]	All charts updated at publication of 3e in December 2013 – updated charts indicated below
Abdominal pain in adults	Dec 2016, Feb 2017
Abdominal pain in children	July 2016, Dec 2016, Feb 2017
Abscesses and local infections	May 2016, Dec 2016, Feb 2017
Abused or neglected child	Mar 2017



Manchester Triage System



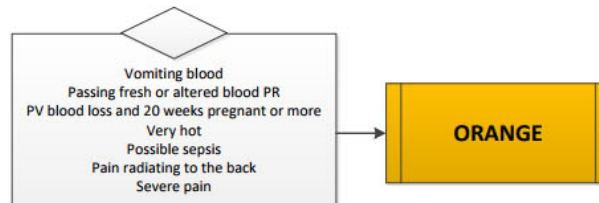
Abdominal pain in adults

[\[Back to top\]](#)

Changes to discriminator or chart	Changes in discriminator definition	Rationale	Date
Addition of new discriminator 'Possible sepsis' to Orange	Suspected sepsis in patients who present with altered mental state, low blood pressure (Systolic less than 100) or raised respiratory rate (rate more than 22). In children, age specific physiological values should be used to determine if possibly septic.	To be able to quickly identify patients who have possible sepsis	Dec 2016 (Definition updated Feb 2017)

Abdominal pain in adults

[\[Back to top\]](#)

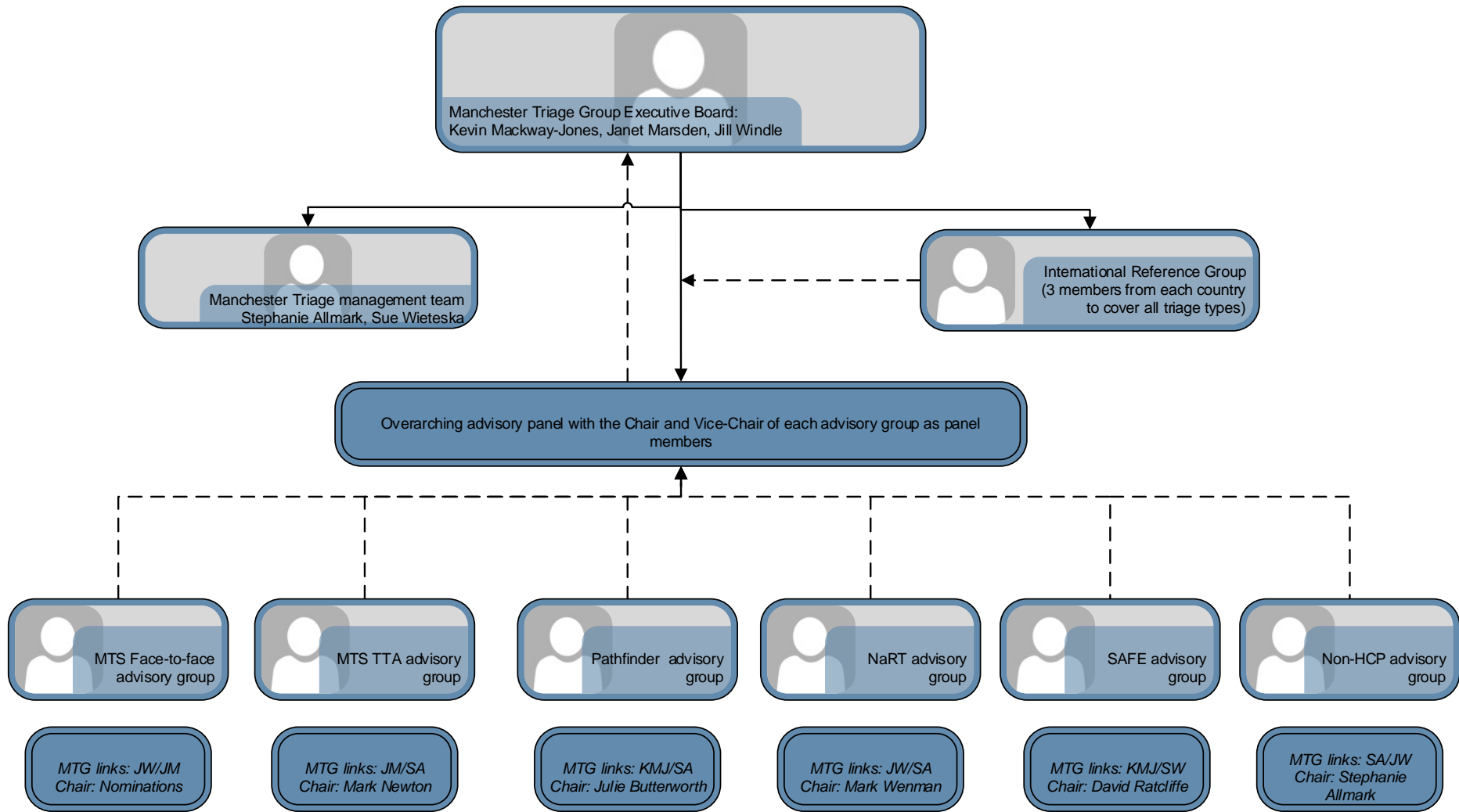


**Manchester
Triage
System**



A charity dedicated to saving life by providing training

© ALSG/MTG, 2017



**Manchester
Triage
System**



© ALSG/MTG, 2017



Manchester Triage System from start to ...

October 2017



**Manchester
Triage
System**



**Advanced
Life
Support
Group**

A charity dedicated to saving life by providing training

© ALSG/MTG, 2017